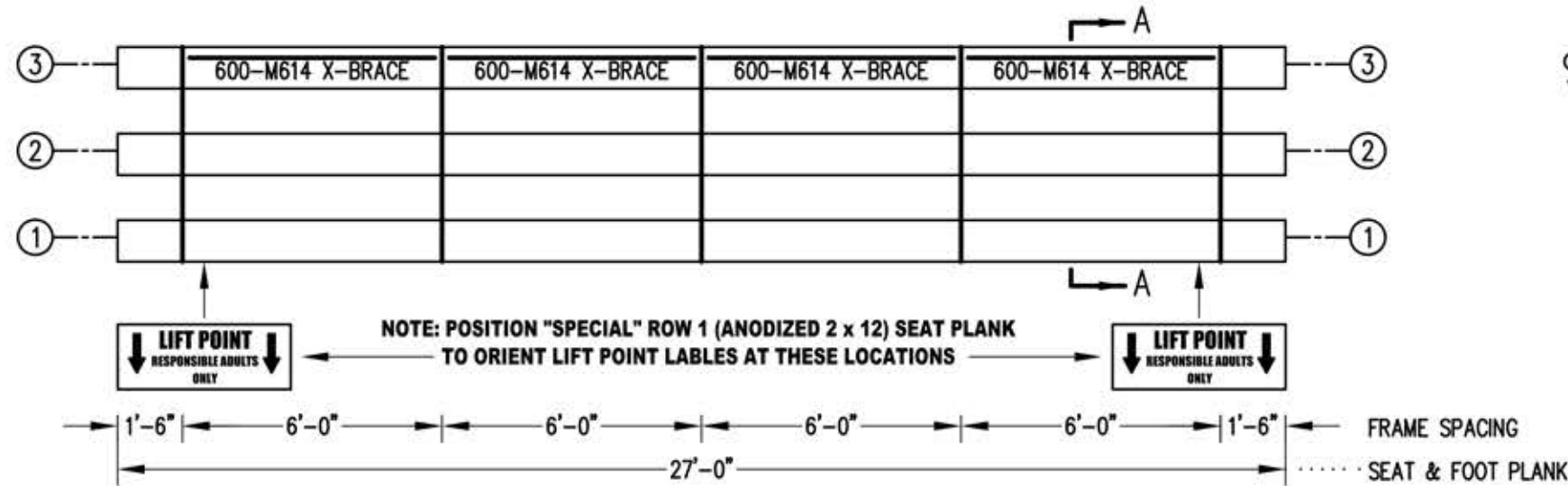
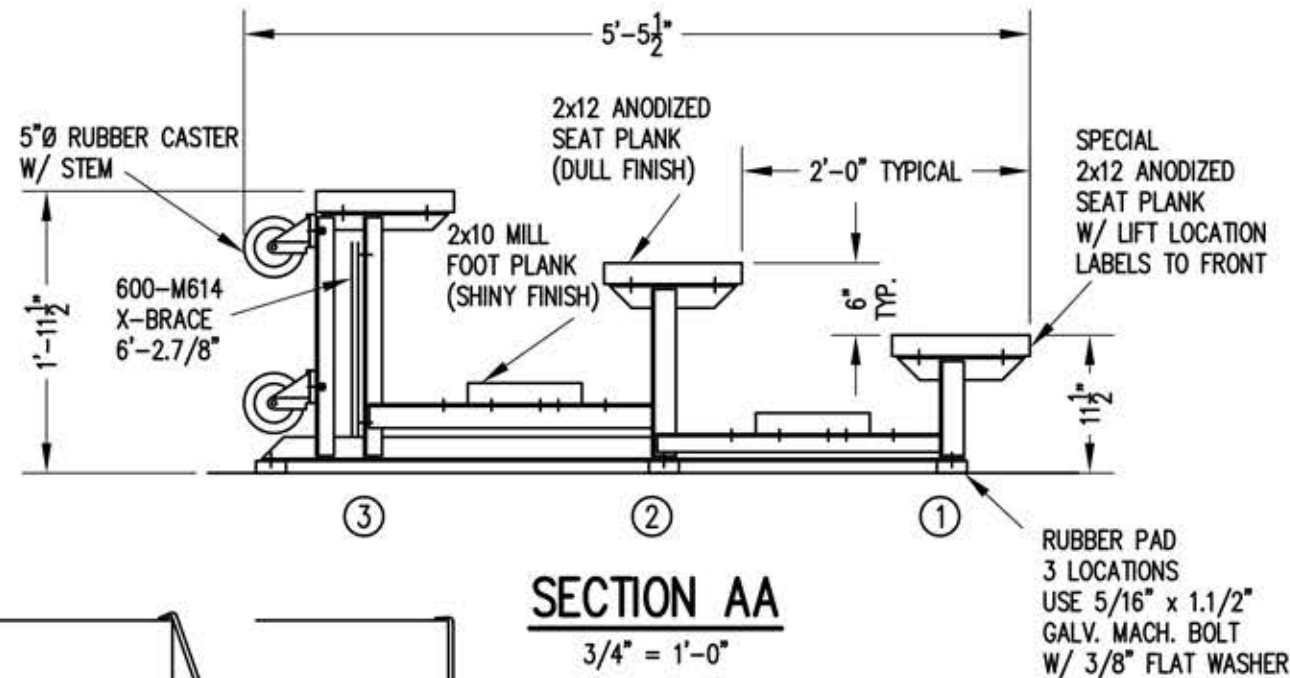


# INSTRUCTION/ASSEMBLY DRAWING



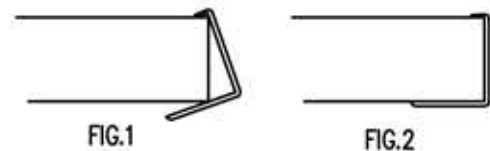
## SEAT & FRAMING PLAN

1/4" = 1'-0"  
54 NET SEATS @ 18" PER SEAT



## SECTION AA

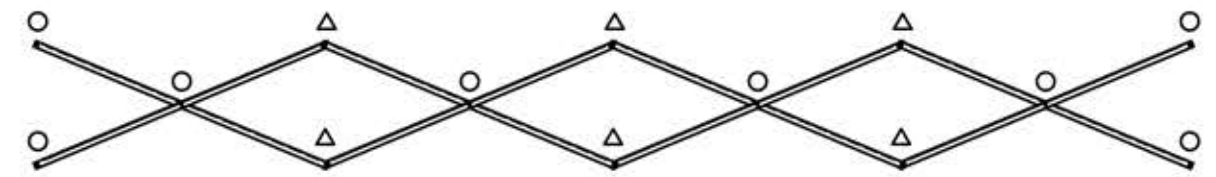
3/4" = 1'-0"



- 1) LOCATE THE CHANNEL END CAP AS SHOWN IN FIG. 1.
- 2) TAP END CAP INTO PLACE WITH RUBBER Mallet OR SOFT WOOD. FIG.2
- 3) DRILL TWO 5/32" HOLES THROUGH THE BOTTOM FLANGE AND THE BOTTOM OUTSIDE PLANK FLANGES. INSTALL TWO 3/16" DRIVE RIVETS. (2 PER PLANK)

## END CAP DETAIL

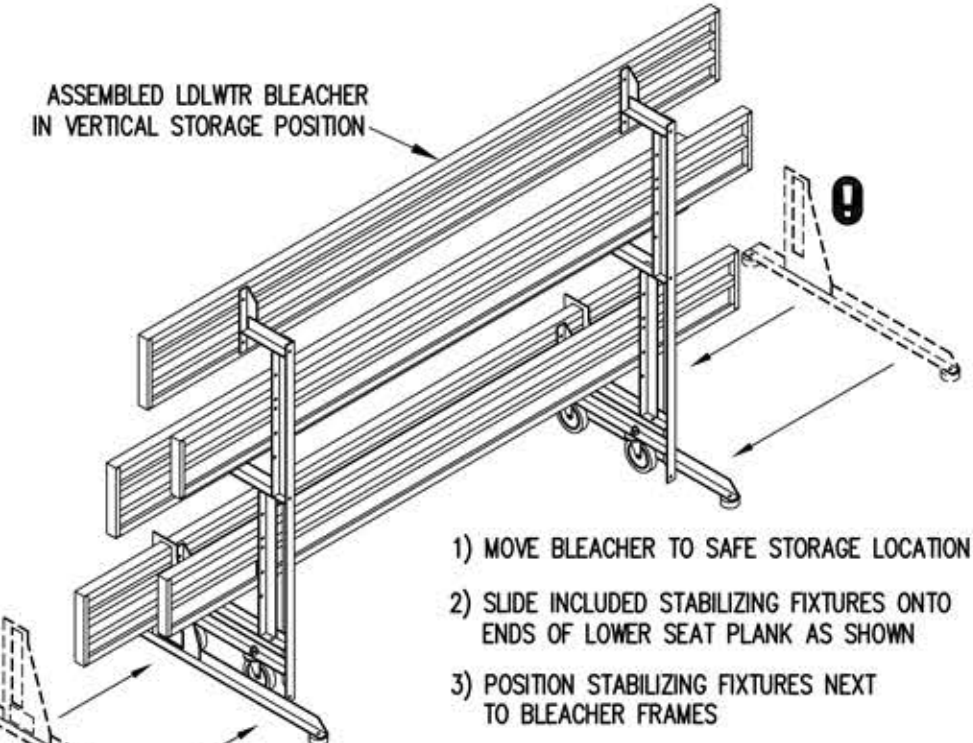
N.T.S.



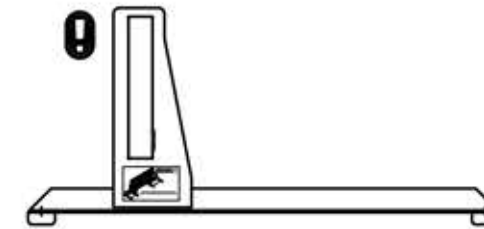
## X-BRACE DETAIL

N.T.S.

- 7/16" x 1" GALV. MACH. BOLT
- △ 7/16" x 1.1/2" GALV. MACH. BOLT



## VERTICAL STORAGE OF BLEACHER WHEN REQUIRED

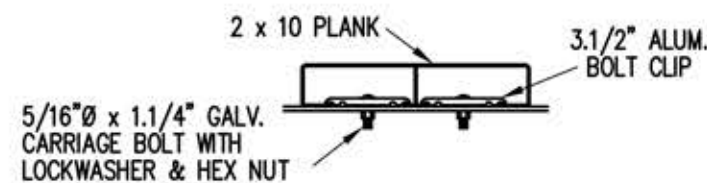


## MANDATORY STABILIZING FIXTURE

3/4" = 1'-0"

STABILIZING FIXTURE - ONE REQUIRED FOR EACH END OF BLEACHER

NOTE: OUTDOOR ALUMINUM INC. RECOMMENDS STORING TIP AND ROLL BLEACHERS IN THE "IN USE" POSITION WHEN POSSIBLE - WHERE VERTICAL STORAGE IS REQUIRED, ALL OUTLINED PROCEDURES AND SAFETY WARNINGS, SPECIFICALLY INCLUDING THE MANDATORY USE OF THE STABILIZING FIXTURES OUTLINED ABOVE, MUST BE STRICTLY FOLLOWED.



## BOLT CLIP DETAIL

1.1/2" = 1'-0"



SIGHTLINES  
ATHLETIC FACILITIES  
CRESTWOOD, KY  
800-609-1545

LDLWTR 3-27 SEATING/FRAMING PLAN

664-E1062